



# SMART HOME TECHNOLOGY SERVICES

New Home Technology Checklist

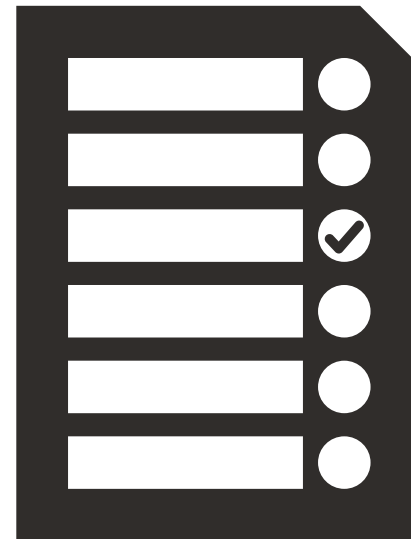


# *The house is yours, you did it!*

The thrill of finally finding a place that meets all your needs and preferences, and the anticipation of making it your own, can create a sense of euphoria that is hard to replicate. From choosing the location and style of the home, to browsing through countless listings and attending open houses, the entire process can feel like a thrilling adventure. The thought of starting fresh in a new space and creating new memories can be a powerful motivator, and the sense of accomplishment that comes with finally closing the deal on your dream home is unmatched. Whether you are a first-time homebuyer or a seasoned homeowner, the excitement of purchasing a new house can be truly unforgettable.

Now that the deal is done, that is where we come in. While modern cars are expected to have back up cameras, blind spot detection, automatic cruise control, and more; technology in the modern home can feel like an afterthought. At VHS we believe that a properly curated technology solution for your home can make life more convenient, safer, and more fun. Keep scrolling or things to consider.

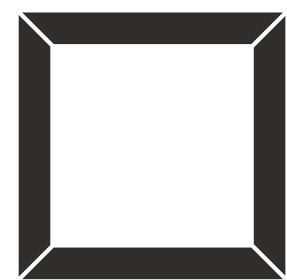
# *New Home Technology Checklist*



In an effort to make things a bit less daunting, we've put together a home technology checklist that we believe will cover your bases. That being said, there are always extremes when it comes to what's possible. We can also take care of converting that extra garage bay into a golf simulator or creating the home theatre of your dreams. This checklist serves as a guide to help with key things that are required in most cases when moving into a new home.

- Internet Service Provider Selection & Ordering
- Low Voltage Cabling
- Network Setup & Configuration
- Security (Locks/Alarm)
- TV Mounting
- Existing Technology
- Camera Systems
- Lighting

# *Choosing your Internet Service Provider*



This is the only step that is a must-do for the checklist. These days, having internet is essentially as important as having water or electricity. What was a luxury just a couple decades ago has now become a utility. If fiber internet is available at your new home, we recommend going with that. Fiber is much faster and way more reliable, that being said, standard cable internet has come a long way. Go for the fastest speeds you can within your budget.

We recommend ordering your service to be installed for as close to your closing date as possible, having working WiFi during the move can make the process much smoother for everyone.

Spectrum Customer Service Number: 855.366.7132

ATT Customer Service Number: 800.288.2020

CenturyLink: 855.423.8741

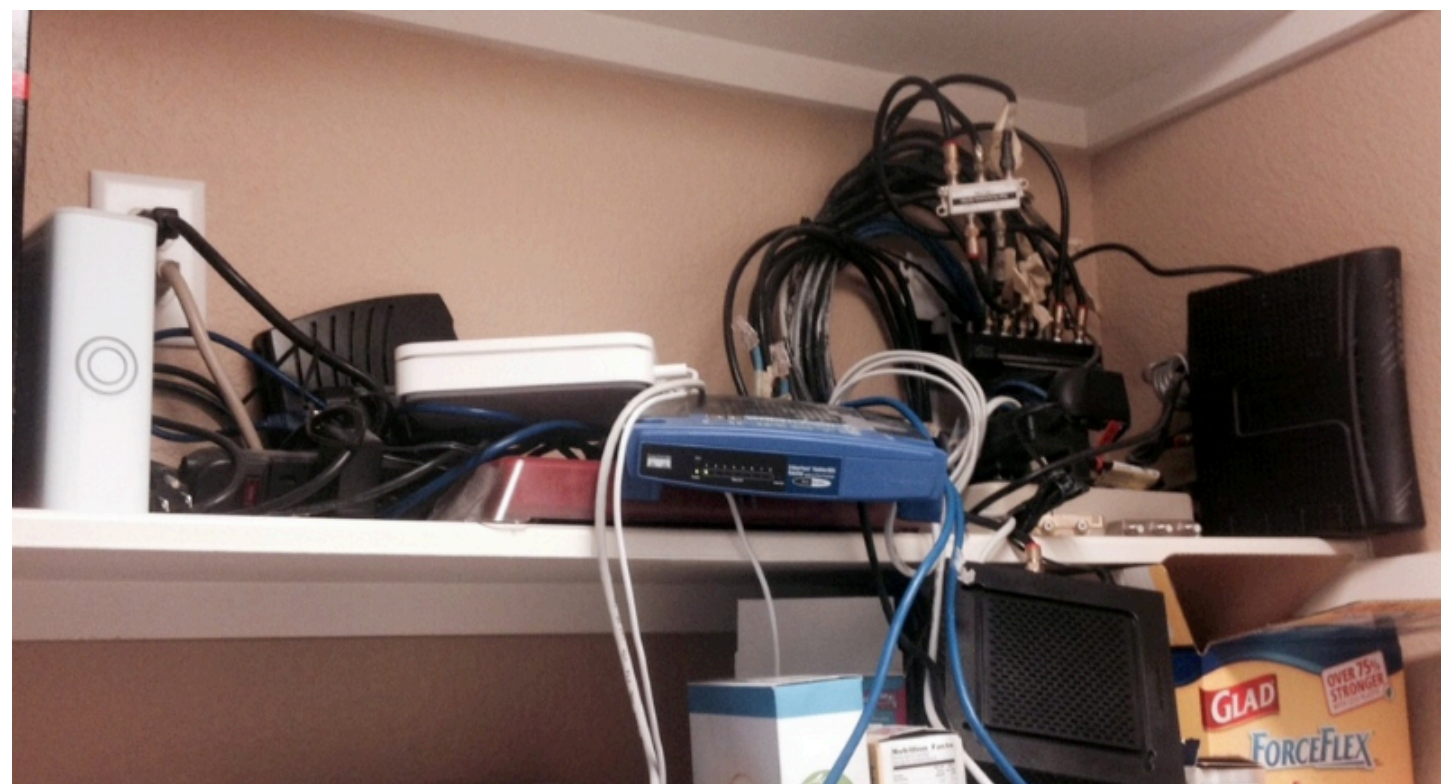
**\*\*Note:** These numbers are for the St. Louis area market. If you live in a rural area we can broker finding you a solution.

# Low Voltage Cabling

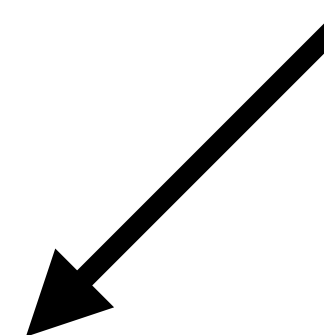


Low voltage cabling refers to **the installation of cables and wiring that carry low voltage electrical signals, usually below 50 volts**. It is used for a variety of applications including data communication, audio/visual systems, security systems, and lighting control systems. If your home is prewired with ethernet cabling and/or speaker cabling, getting a good grasp of where it all goes to is important for ensuring you'll have the best connectivity possible.

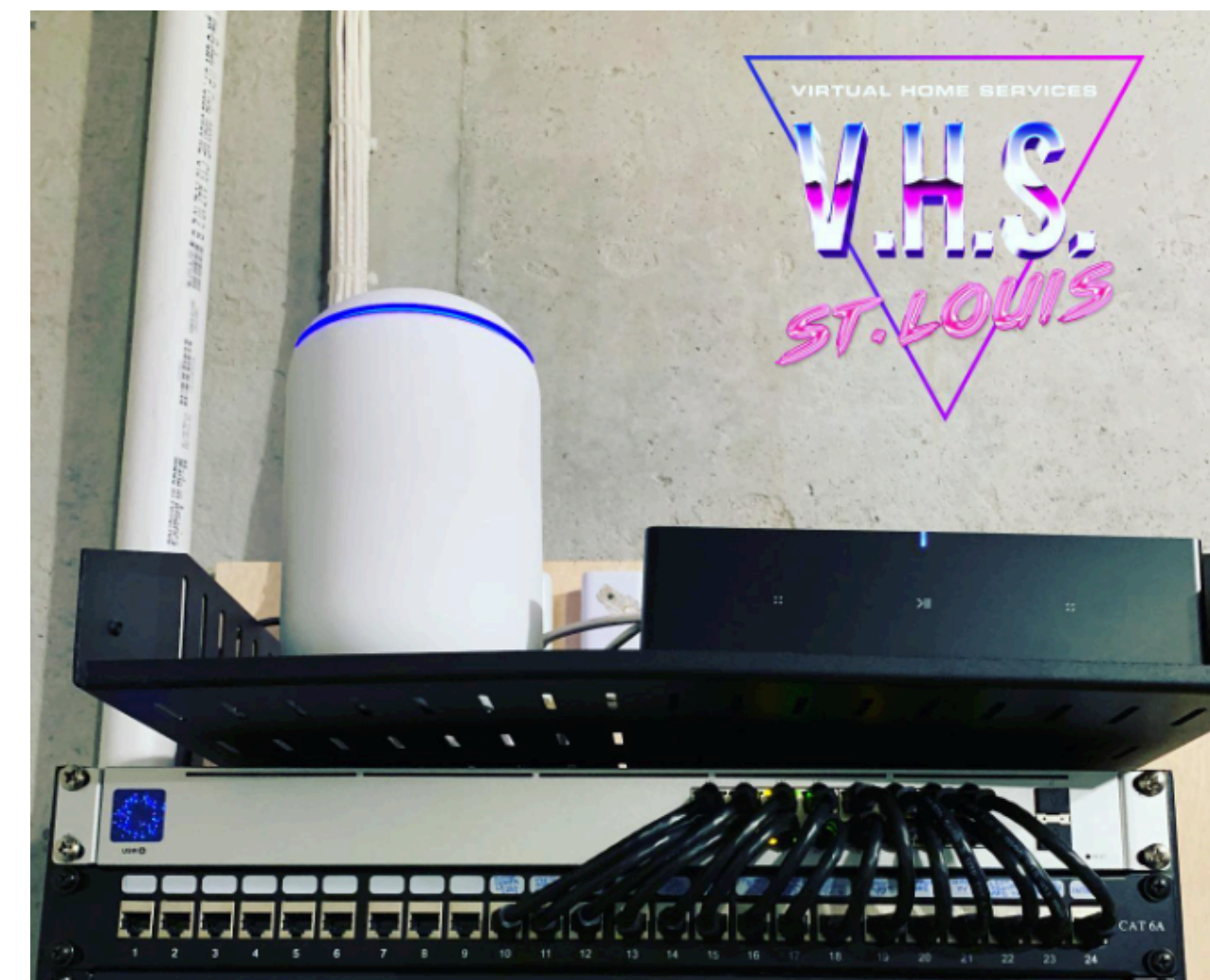
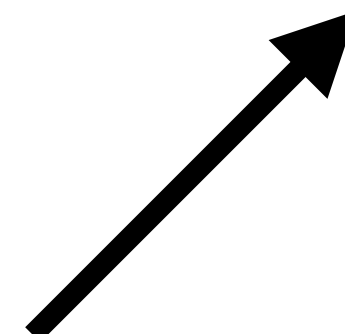
If you have a massive amount of cabling that is incredibly disorganized, we can help ensure everything is properly tested and labeled.



Less This...



More This!



# *Network Setup & Configuration*



With a properly configured network one person can be streaming 4K video on Netflix, while another is taking a video conference call, and another is engaged in an epic battle in an online game. Cameras around the house are monitoring and a host of other connected devices are humming along. With a poorly configured network, things start to fall apart fast leading to annoyances and frustration for all.

Depending on your family's requirements and the size of your home, the router provided by your ISP may be sufficient. In a lot of cases, an upgrade is warranted. Mesh systems offer a ton of flexibility and hardwired WiFi access points will give you the best performance. Going back to the low-voltage cabling, you may be able to improve your connection via existing cabling or we can assist in hard-wiring critical components.

At bare minimum, you should ensure that your network is segmented for home users and guests. This portion is also **ESPECIALLY** important for people who often work from home.

# Security



When you move into your new house it is important that you re-key your locks or if you have smart locks, be sure to factory reset them so there aren't random keys or door codes in other people's hands.

Tired of keys? Smart locks are a great addition to any home and the convenience is unmatched, providing greater flexibility and convenience for homeowners and their guests. Smart locks offer enhanced security features and convenient access control, allowing homeowners to monitor and control their locks remotely from their smartphones or other connected devices.

In addition to physical locks on your doors, implementing an alarm system ensures another layer of security for you and your family. Alarms have evolved tremendously over the last few years from only securing the home to now providing home health alerts: Implement water sensors to prevent a minor unknown leak from transforming into a major repair, freezer sensors that ensure your freezers are functioning properly, and much more.

# *TV Mounting & Cable Management*



Depending on the surface where you want to mount your TV, the process isn't extremely complicated as long as you take your time and measure carefully. When mounting on surfaces like brick or plaster, a bit more care and precaution needs to be taken to ensure it is anchored securely. We **ALWAYS** recommend going with an articulating mount, even if you don't need angle the display, having articulation allows you to get behind the TV easier in the future to access HDMI ports, manual buttons, etc.

Our personal favorite mount is the SANUS VDLT 17. It supports up to 85" screens and gives a ton of flexibility for mounting position.

Another key factor when mounting TVs is the cable management, hiding the cables in the wall or moving power to behind the screen helps ensure a clean aesthetic. Some scenarios do require an electrician, for those situations we are partnered with Loveland Home Solutions - they are a full service electrical company and can easily add outlets wherever needed.



# Camera Systems

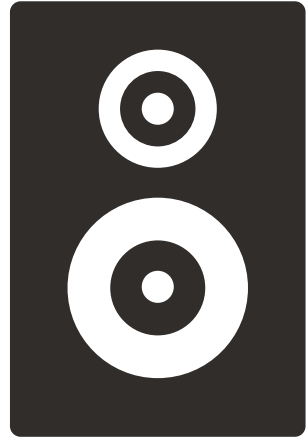


Adding cameras to your new home is a great way to add safety, security, and peace of mind. At a minimum, we would recommend adding a video doorbell, but the best scenario is covering each point of entry into your home.

As far as indoor cameras go, that is 100% a personal preference and what you're comfortable with. Some people love them while others despise the thought of it, that being said, they are great for monitoring pets if you're gone for extended periods of time. Others may have a camera that they only set up when traveling to ensure they can monitor their house while they're gone.

Our opinion may be a bit biased as a Ring partner, however, we partnered with them for a reason. As far as WiFi cameras go, they are rock solid for reliability, image quality, and ease of use. If you want true 24/7 recording, that isn't stored in the cloud, with no monthly fees, we've got great options for that as well.

# *Existing Technology*

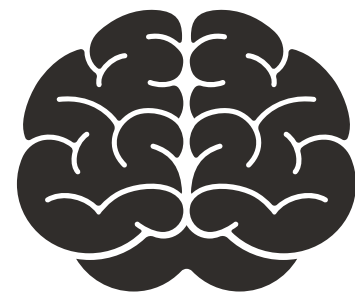


Your new home may have a ton of existing technology in it that may be hard to unravel to figure out what works and what doesn't. If you have existing speakers in your ceilings/walls, or WiFi access points in your ceiling, or a home theatre with outdated equipment that you don't even know how to turn on, then your best bet may be to give us a call to do a survey of what you have and what is usable.

Our belief, like with the low voltage cabling, is to make use of as much of what is existing as possible and only upgrade if required/wanted.

Often times old camera system have cables that can be re-used to provide better resolution or app functionality, and an outdated distributed audio system (speakers in walls and ceiling) connected to a big receiver and CD player could be modified to support streaming via SONOS or something similar.

# *Wish List / Consulting*



As we mentioned in the beginning, the items in the checklist are things that most homeowners should consider in 2023. Everything on this checklist may not resonate with you, but know that everything listed can easily be added to your new home. As with anything else, having a plan for what you want your experience to be is key. Taking the time to properly curate the solutions for your home will create an environment where the technology enhances your experience vs becoming a distraction.

There are countless more things we could include here like smart garage door openers, pet feeders, golf simulators, home theaters, and more. We hope this guide helps you as you're preparing to get the keys to your new home. In the meantime, our team looks forward to being a resource for you and your family in the future for all of your technology needs. Be sure to follow us on Instagram/Facebook where you can see real-time updates on all of the cool projects we're completing in the St. Louis and surrounding areas.